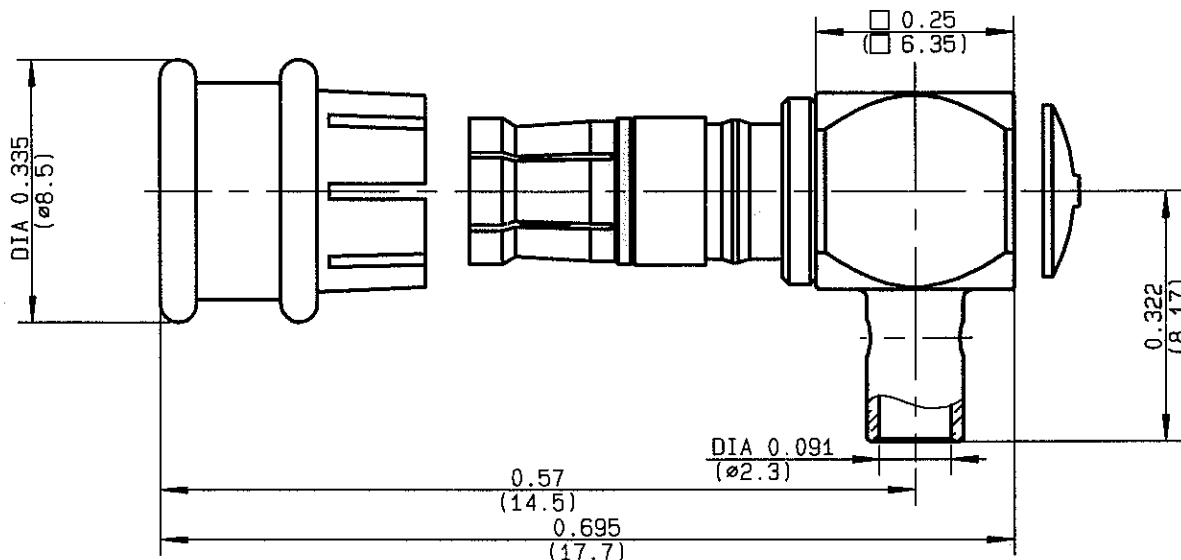


**RIGHT ANGLE PLUG SOLDER TYPE
CABLE .085**

R117.152.807
SERIES **SMB-LOCK**



NOMINAL IMPEDANCE	50 Ω
FREQUENCY RANGE	0-4 GHz
TEMPERATURE RATING	-35/+125 °C
V.S.W.R	1.05 + .05 x F(GHz)Maxi
RF INSERTION LOSS	0.25 √F(GHz) dB Maxi
VOLTAGE RATING	335 Veff Maxi
DIELECTRIC WITHSTANDING VOLTAGE	750 Veff Mini
INSULATION RESISTANCE	1000 MΩMini
HERMETIC SEAL	NA Atm.cm ³ /s
LEAKAGE (pressurized only)	NA
MECHANICAL DURABILITY	500 Cycles
WEIGHT	2.9 gr
SPECIFICATION	

CABLES : **KS 1**
RG 405

OTHERS CHARACTERISTICS

CABLE RETENTION	200 N Mini
CENTER CONTACT RETENTION	
Axial force - mating end	10 N Mini
Axial force - opposite end	10 N Mini
Torque	NA cm.N Mini
RECOMMENDED TORQUES	
Mating	NA cm.N
Panel nut	NA cm.N
Clamp nut	NA cm.N

CONNECTOR PARTS	MATERIALS	FINISH	(all values are given in micrometers)
BODY	BRASS	BBR 2	
OUTER CONTACT	BRONZE	BBR 2	
CENTER CONTACT	BERYLLIUM COPPER	GOLD 0.8 OVER COPPER 0.5	
INSULATOR	PTFE	-	
GASKET		-	
OTHERS PIECES	DELTRIN (POM)		

ISSUE	CREATION DATE	FILE PART-NUMBER
9805A02	10-DEC-97	EPC 97-08



Connect to the future

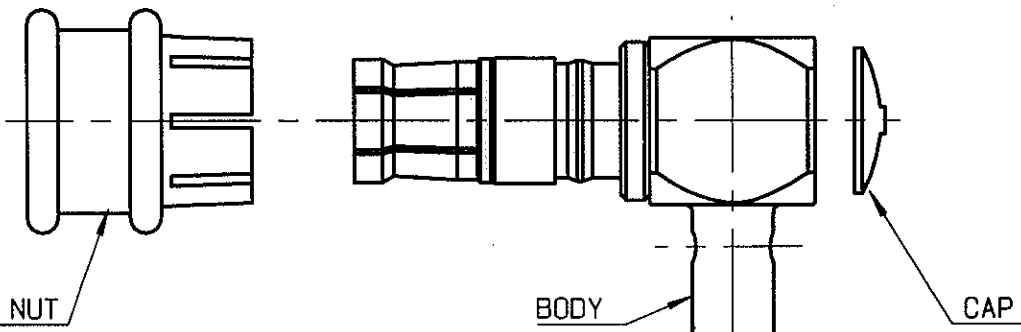
The information given here is subject to change without notice. Design changes may be in order to improve the product.



RADIALL®

R117.152.807

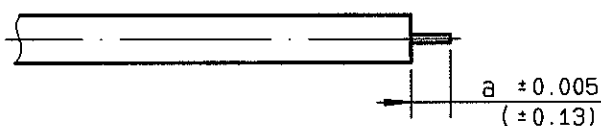
ISSUE 9805A02 SERIES SMB-LOCK



We recommend a thermal preconditioning cable .

①

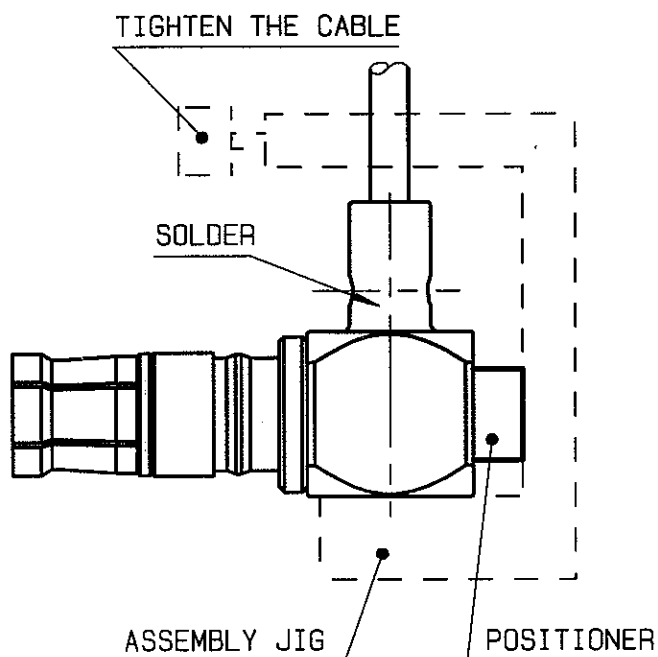
Strip the cable .
Stripping tool R282 051 .
Positioner R282 063 .



Stripping	a	b	c	d	e
inch	0.091 0	0	0	0	0
mm	2.3				

②

Mount the cable into the body .
Mount the positioner : R282 744 210
Place the sub-assembly into the
assembly jig :R282 740 (or equivalent).
Solder body onto the cable .
Let the assembly cool down before
removing it from the jig .



③

Solder the center contact .
Press on the cap .

